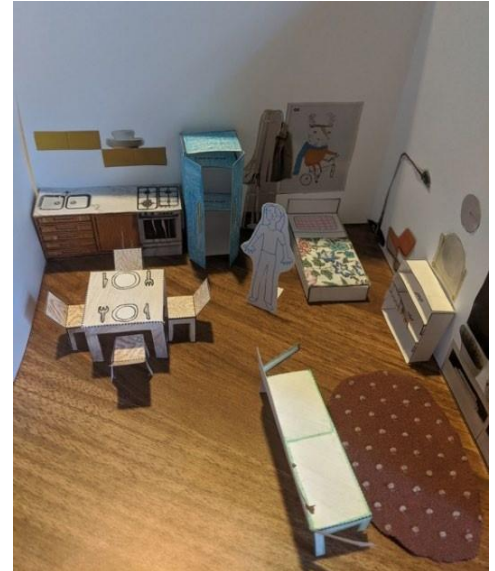


Interior Design - Furnishing and Decor

By adding details and textures to a scale model, architects can help people imagine what the design really feels like. Using your project from the [Interior Design – Building A Scale Model](#) activity, follow the steps below to add 3D furniture and décor to your design! This [video](#) demonstrates how to use the scaled furniture templates we have provided.



Materials

[3D furniture templates at 1/2" = 1' scale](#) • Colored pencils or crayons • Fabric or other collage materials • Scissors • Glue • Tape

Instructions



- | | |
|---------------|---|
| Step 1 | Print our 3D furniture templates or use them as a guide to create your own by measuring the length, width, and height of your furniture and drawing the different pieces to scale using a $\frac{1}{2}'' = 1'$ scale ruler. |
| Step 2 | Cut along the solid lines of the furniture. Add color and details using colored pencils or crayons, fabric, or patterned paper. |
| Step 3 | Fold along the dotted lines of the furniture. Glue or tape the tabs as required. |
| Step 4 | Arrange the scale furniture inside your model and share your final design on Instagram! Tag @centerforarch and use #InteriorDesign |