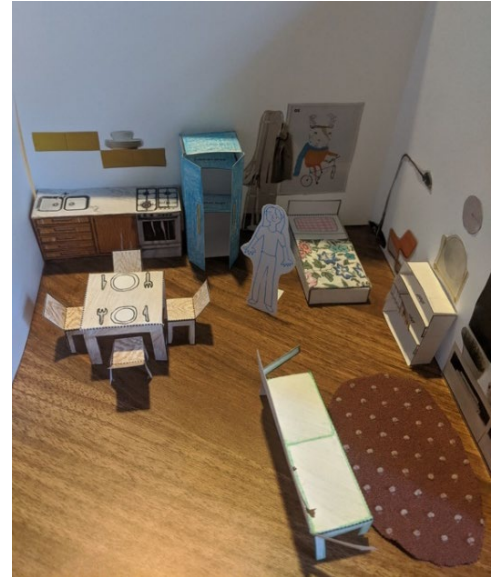


## Interior Design – Furnishing and Decor

By adding details and textures to a scale model, architects can help people imagine what the design really feels like. Using your project from the [Interior Design – Building A Scale Model](#) activity, follow the steps below to add 3D furniture and décor to your design! This [video](#) demonstrates how to use the scaled furniture templates we have provided.



## Materials

3D furniture templates at  $\frac{1}{2}$ " = 1' scale ▪ Colored pencils or crayons ▪ Fabric or other collage materials ▪ Scissors ▪ Glue ▪ Tape

## Instructions



- Step 1** Print our [3D furniture templates](#) or use them as a guide to create your own by measuring the length, width, and height of your furniture and drawing the different pieces to scale using a  $\frac{1}{2}$ " = 1' scale ruler.
- Step 2** Cut along the solid lines of the furniture. Add color and details using colored pencils or crayons, fabric, or patterned paper.
- Step 3** Fold along the dotted lines of the furniture. Glue or tape the tabs as required.
- Step 4** Arrange the scale furniture inside your model and share your final design on Instagram! Tag [@centerforarchk12](#) and use [#architectureathome](#)